



RIGA



Welcome to Riga!



Top Sights in Riga



The Old Town



The Freedom Monument

Latvians are proud of many marvelous things, but one of the most important to us is the Baltic Sea. The beautiful seafront border, rich in golden sand, grey sea stones, precious amber, and steep banks, is like the heartbeat of our people, pulsing through tender summers, bright autumns, crispy winters, and hopeful springs.

Waterways have always played an important role in the development of the 820-year-old city of Riga. The port of Riga is located on the eastern shore of the Baltic Sea at the mouth of the River Daugava in the Gulf of Riga. Both, historically and geographically, the port is an integral part of Riga, occupying 11% of the territory of the city on both banks of the river.

Discover UNESCO World Heritage sites, magnificent architecture, rich culture and history, as well as local food specialties in our capital city! In addition, other neighbouring Latvian cities, such as Jurmala, Sigulda and Rundale, also offer many wonderful discoveries and unforgettable experiences.

Take advantage of the port of Riga and enjoy the exceptional hospitality and beauty at any time of the year!



Medieval Architecture



Latvian Ethnographic Open-Air Museum

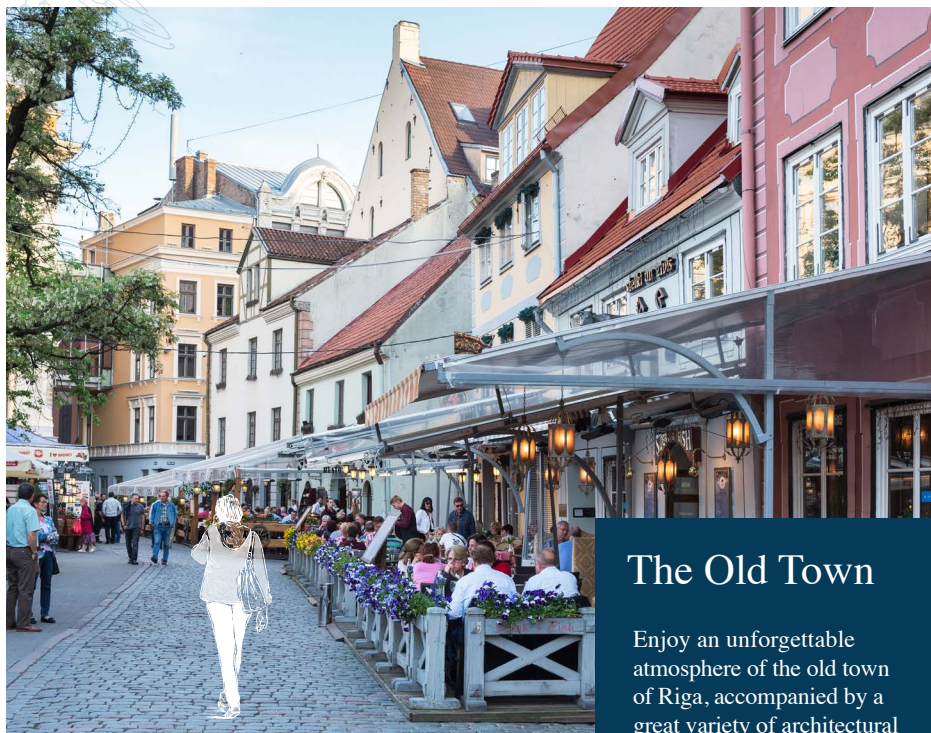


Art Nouveau



Spring

Season of new beginnings



The Old Town

Enjoy an unforgettable atmosphere of the old town of Riga, accompanied by a great variety of architectural gems and countless restaurants for all tastes!



Discover Local Specialties

Riga Central Market is one of the largest and oldest Europe's markets and bazaars. There you can have a taste of and purchase locally grown and homemade products and delicacies, exotic fruits and spices, as well as acquire a wide variety of manufactured merchandise.

Art Life

Our city, called "The Heart of Baltics", is a modern European metropolis rich in cultural and historical heritage which is evident in the city's architecture and cultural life.

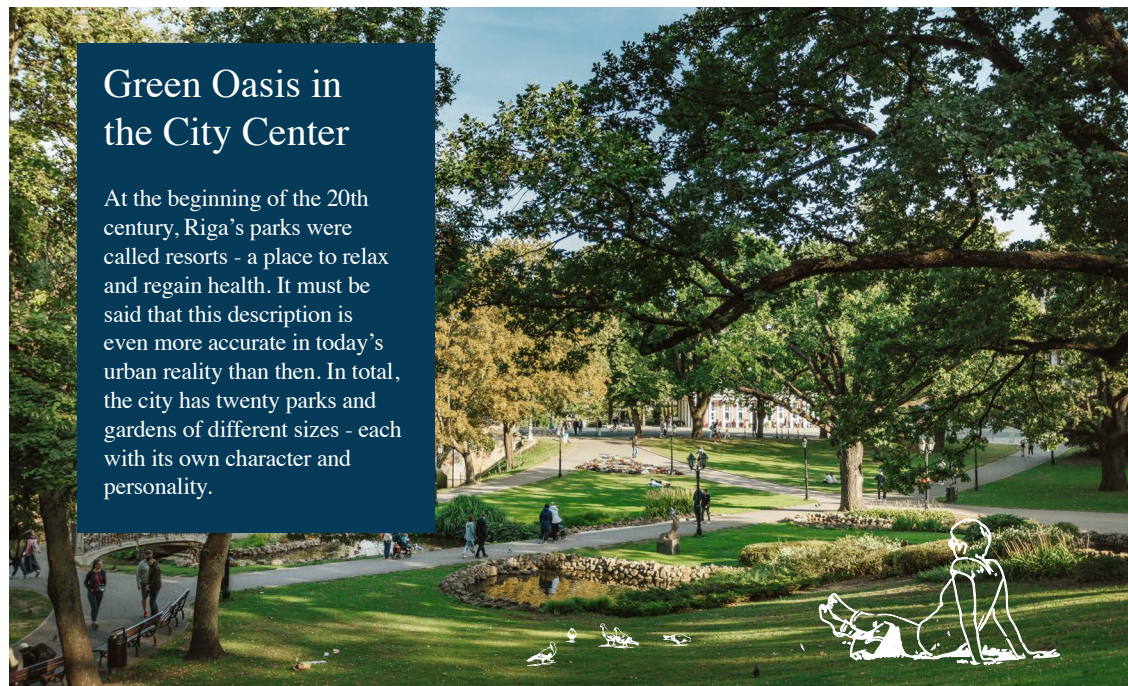
Art collections dedicated to different eras and art genres can be found in Riga's galleries. The building of the Latvian National Museum of Art is a national architectural monument and is one of the most impressive historical buildings within the Riga Avenue circle. The museum regularly offers various temporary exhibitions. Numerous special educational programs and tours guided by museum employees are always available to the visitors.



Photo: Anete Straume
© LNMM

Green Oasis in the City Center

At the beginning of the 20th century, Riga's parks were called resorts - a place to relax and regain health. It must be said that this description is even more accurate in today's urban reality than then. In total, the city has twenty parks and gardens of different sizes - each with its own character and personality.



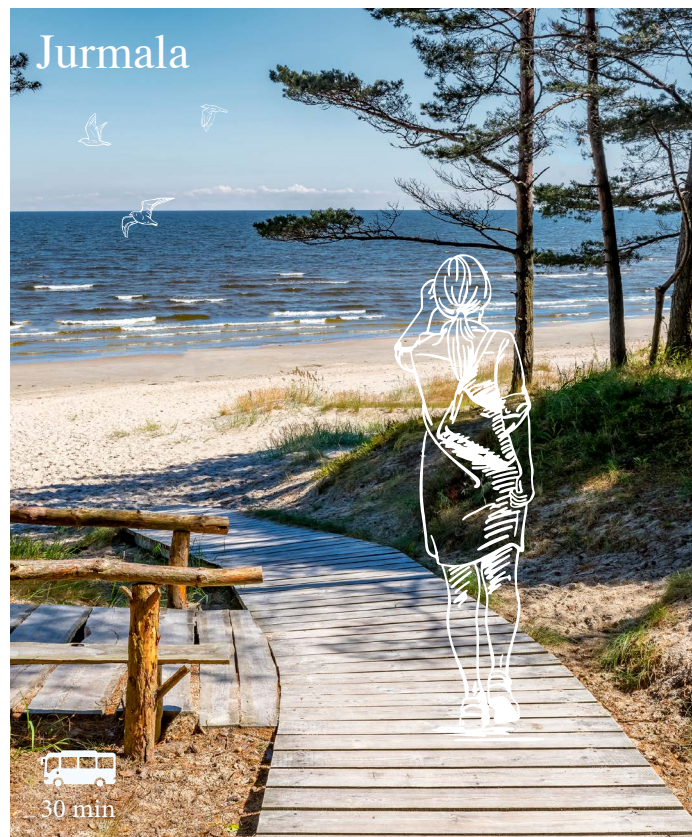
Summer

Hip - hip hooray, for the beautiful summer day



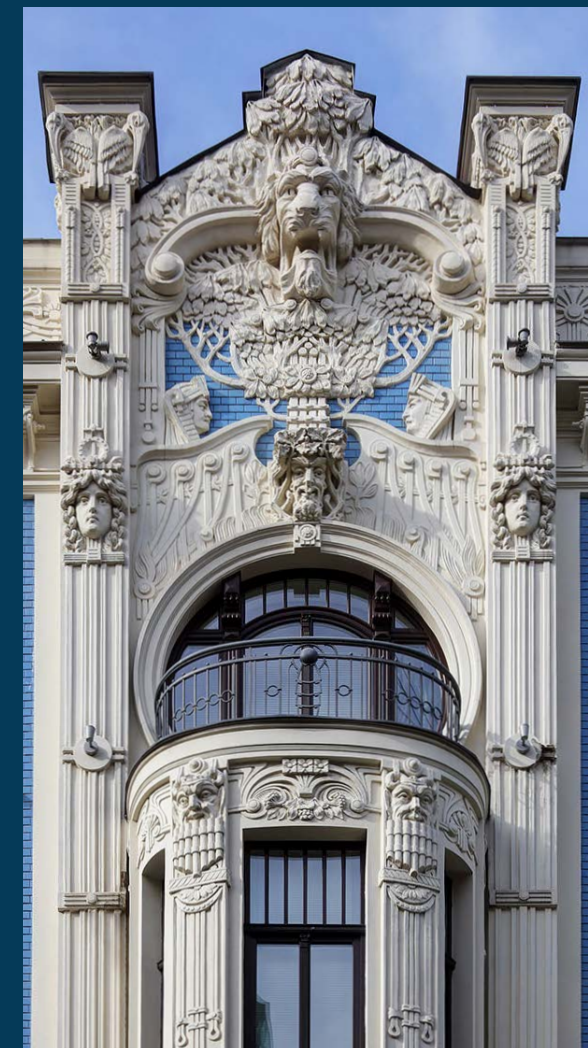
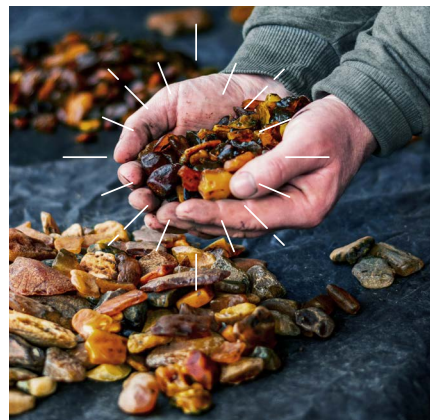
Rundale Palace

Rundale palace is one of Latvia's most exquisite monuments of Baroque and Rococo art. The palace was built as the summer residence of the duke of Courland, Ernst Johan Byron, and it was designed by the outstanding Italian architect Francesco Bartolomeo Rastrelli. The construction of the palace ensemble took place between 1736 and 1740.



Beauty of Latvian Amber

Latvians occasionally call the Baltic Sea "Amber Sea" as smaller and larger pieces of amber get washed up along the Baltic Sea coast regularly. The shiny (when polished) specimens we see today have been around for 40 million years. Our local artisans and artists use amber for creating jewelry, artwork, and even song lyrics.



Art Nouveau

Riga is known as the European capital of Art Nouveau, the decorative style of art and architecture between 1890 and 1910. Today, approximately 800 of the city's buildings feature Art Nouveau facades, which include characteristic motifs such as stylized plants, floral and marine life, screaming and laughing masks, and sculptures depicting the female form, an eternal symbol of beauty. Each edifice is a unique masterpiece of design and construction.

Fall

I might love fall most of all



Sigulda

Although Sigulda is located just an hour long drive away from Riga, it feels a world away and is often called the Little Switzerland of Latvia. This charming town is surrounded by lush forests, Devonian sandstone cliffs and caves, as well as a surprising amount of adrenaline-pumping adventure opportunities. You can visit Sigulda at any time of the year, however, the most spectacular views of bright red and yellow coloured trees await during the autumn season.



LNOB

A true pride of the country, Latvian National Opera and Ballet presents over 200 performances each season (September-May).

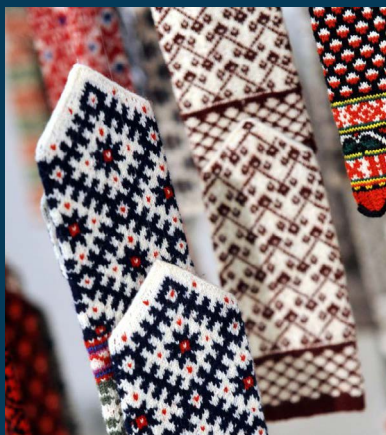


Riga by Canal

If you would like to experience a different viewpoint of the historical Riga city center and discover a fresh panoramic look of this beautiful city's silhouette from the river Daugava, use the Riga by Canal opportunity - take a trip with one of the special boats, which replicate the authentic historical design.

Winter

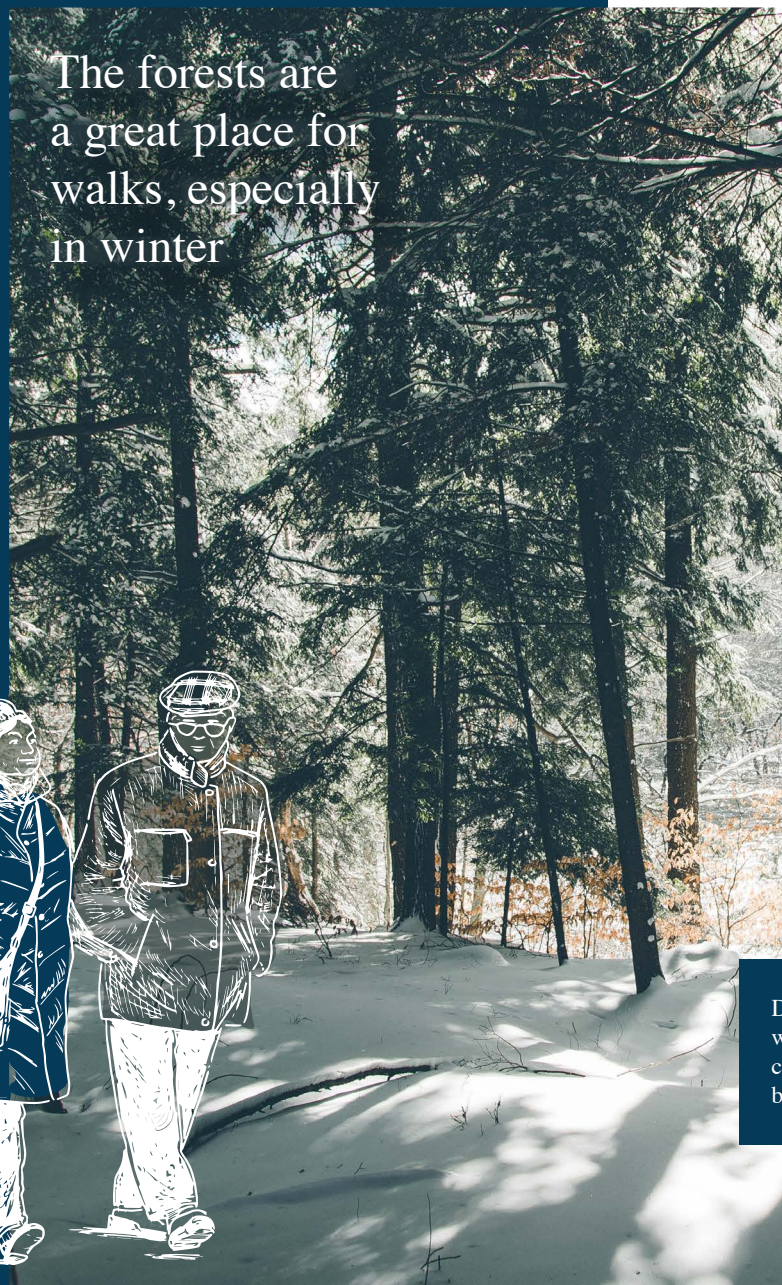
You will miss it when it's gone



Latvia has a long history and deep traditions of the wool and linen textile fiber production and woodworking artisanship. We are especially proud to be among the rare producers of ethnographic fabrics based on authentic samples of the rich cultural heritage of the Baltic region. Our knitted, woven, and carved products of a superior quality are telling a beautiful story about our land, our people, and our heritage.



The forests are
a great place for
walks, especially
in winter

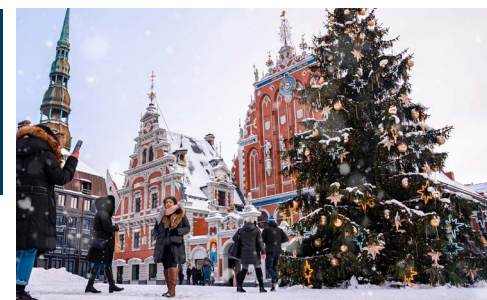


Christmas Market

Open every day from the beginning of December to January 8th

Welcome to Riga Christmas markets with the most wonderful senses, smells, flavors, cheerful atmosphere and beautiful gift offers! Craftsmen, artisans, home producers and designers from all parts of Latvia will set up their little shops, offering handmade silver, leather, glass, and ceramic ornaments, elegant design objects, natural cosmetics, handmade woolen gloves, scarves, hats, and socks. The wide selection of gifts will also include natural wax candles, delicious baked goods, preserves, smoked meats and other delicacies, and, most certainly, a hot Christmas drink for a joyful shopping!

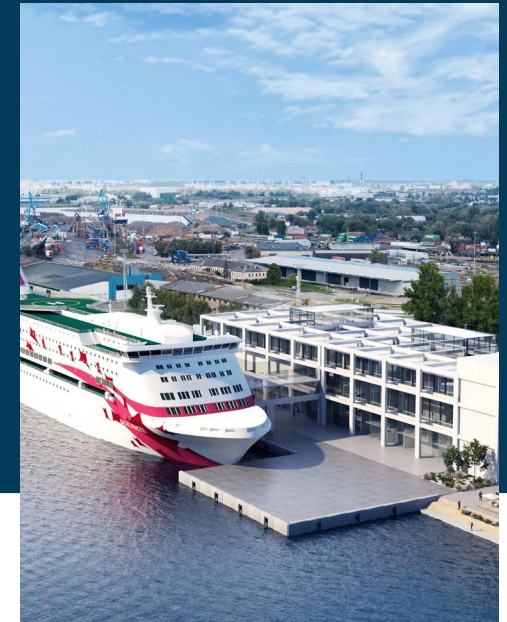
Did you know that medieval Riga was actually among the first European cities to decorate a Christmas tree back in 1510?



Cruise Infrastructure



Cruise Infrastructure



Riga Passenger Port

Features exclusive location – guests can reach the Old Town of Riga within a few minutes' walk.

MK-3 and MK-4

Max LOA: 300 m
Max draft: 8.7 m

JPS-1 and JPS-2

Max LOA: 280 m
Max draft: 7.6 m

Riga Central Terminal

The city center and the Old Town are situated within a close distance.

EO-6, EO-7 and EO-8

Max LOA: 240 m
Max draft: 9.1 m

KS Terminal

The general cargo terminal with the ability to service large cruise ships. The city center is reachable in 30-40 min drive.

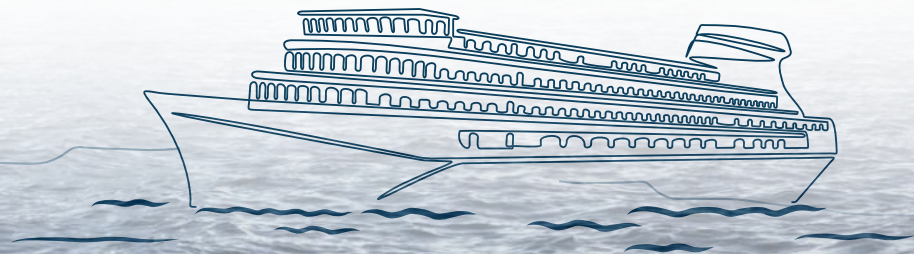
KRS-1 and KRS-2

Max LOA: 320 m
Max draft: 10 m

Riga RoPax Terminal

Estimated to be ready in 2026

The project is being developed on the site of Riga Central Terminal, within a short distance to the city center. The total territory of the project covers 20 ha, including 3 berths on a single line with a total length of 620 m and a proposed draft of up to 10.5 m.



Future Projects in Riga

Riga RoPax terminal



Planned RoPax Infrastructure

New terminal project territory: 20 ha
Bordering with 55 ha Riga Port City project

Terminal berths: 10.5 m depth,
turnaround basin 460 m

Phase I

3 berths – 618 m: EO-6 240 m; EO-7 190 m;
EO-8 188 m

2 berths – 462 m: MK-3 240 m; MK-4 222 m
(existing Riga Passenger port)

Phase II

5 berths – 898 m: EO-6 240 m; EO-7 190 m;
EO-8 188 m; EO-9 130 m; EO-10 150 m

Terminal building: 3 floors

18 000 m² developed in phases



What the new RoPax is about:

- Passenger terminal
- Cruise Ship passengers
- RO-RO terminal
- Commercial space
- Catering facilities
- Retail space
- Creative and innovation space
- Publicly accessible waterfront
- Designed public areas
- Smaller environmental footprint for city center
- Future goal – Cruise ship home port



Rail Baltica is currently one of the biggest investments in improving the mobility and travel opportunities as well as developing business, trade, tourism and the exchange of goods in the Baltic region.

So far, the three Baltic states and RB Rail AS have received three grants designed under the CEF for the construction of the Rail Baltica railway, having signed Grant Agreements to a total value of 824 million euros, for Latvia projects – 303 million euros.

Riga Airport handled more than 7.8 million passengers in 2019.



Riga Central Train Station (Rail Baltica)



Riga International Airport Hub (Rail Baltica)

Port Dues and Rebates

Port Dues

Canal due: 0.10 EUR/GT separately per arrival and departure

Sanitary due: 0.025 EUR/GT per call

Berthing due: 0.09 EUR/GT per each use of berth

Passenger due: 1.10 EUR/pax separately per arrival and departure

Children under 12 years shall be exempted from passenger dues

Navigation fee

Payable to the Latvian Maritime Administration

0.053 EUR/GT for the first 10 visits per calendar year

Rebates

A cruise ship shall enjoy rebates on canal dues, berthing dues and passenger dues depending on the number of port calls within one calendar year in compliance with the shipping schedule specified in the contract, starting with the first port call of a cruise ship, as follows:

20% - upon 5th to 10th call at the Port;

40% - 11 and more calls at the Port

Example

114425 GT 3250 Passengers	1 - 4 calls per calender year	5 - 10 calls per calender year	11 and more calls per calender year
		20% discount	40% discount
Canal due	22 885	18 308	13 731
Berth due	10 298	8 239	6 179
Sanitary fee	2 861	2 861	2 861
Passenger due	7 150	5 720	4 290
Total port dues per call (EUR)	43 194	35 127	27 061

Our Cruise Partners

AIDA Cruises
Azamara Cruises
Celebrity Cruises
Costa Cruises
Cunard Line
Disney Cruises
Fred. Olsen Cruise Lines
Grand Circle Cruise Line
Hapag-LLOYD Cruises
Holland America Line
Linblad Expeditions
Majestic International Cruises/Hansa Touristik
Marella Cruises
MSC Cruises
Mystic Cruises
Noble Caledonia
Norwegian Cruise Line
Oceania Cruises
P&O Cruises
Phoenix Reisen
Plantours Cruises
Ponant Cruises
Princess Cruises
Regent Seven Seas Cruises
Royal Caribbean International
Saga Cruises
Sea Cloud Cruises
Silversea Cruises
TUI Cruises
Variety Cruises
Windstar Cruises

Be our guest!



Riga – a unique city rich in traditions, always changing and amazing!

I invite everyone to come to Riga and feel the magic synergy between the historical heritage, preserved for more than 820 years, and the up-to-date creative urban diversity. Our beautiful city boasts fantastic cultural and artistic life, great cuisine, modern entertainment and sports venues, lots of greenery and accessible waterfront. No wonder that Riga is often called a “pearl of the Baltic Sea coast” – our charming city welcomes every guest, and those who have visited it at least once will remember it for a long time!

The Port of Riga is also growing and developing together with the city of Riga. Currently the new RoPax terminal project is underway – very soon we shall be able to accommodate more cruise vessels and make the port and the city infrastructure of Riga more accessible to cruise passengers.

We look forward to welcoming you here! And we will make sure that your voyage to Riga is safe, comfortable and unforgettable!

Viesturs Zeps
Chairman of the Board
Member of Riga City Council

Riga is safe

Check the Freeport of Riga
Management Plan to Mitigate
Covid-19 Virus Spread Risk.





Freeport of Riga Authority

Address: 12 Kalpaka blvd, Riga, LV - 1010, Latvia

Phone: +371 67030800, e-mail: info@rop.lv, web: www.rop.lv



**LIVE
RIGA**

More information about Riga:
LiveRiga.com